



RETURN TO THE FUTURE

TEST YOUR KNOWLEDGE IN A QUIZ!

1 What is the average number of beverage containers returned in Finland every second?

- about 7
- about 70
- about 700

2 What percentage of all cans and bottles sold annually is recycled, or returned to the future, on average?

- 50 %?
- 70 %?
- Over 90 %?

3 What are the steps in the beverage container cycle before they can be found in the future?

4 What kind of new life could a plastic bottle have in the future? Circle the right options.

- New can
- New glass bottle
- New plastic bottle
- Glass wool
- Backpack
- Umbrella
- Shirt

5 How can you know whether there is a deposit on the can or bottle?

6 Where would you return these containers without a deposit? Connect the right options.

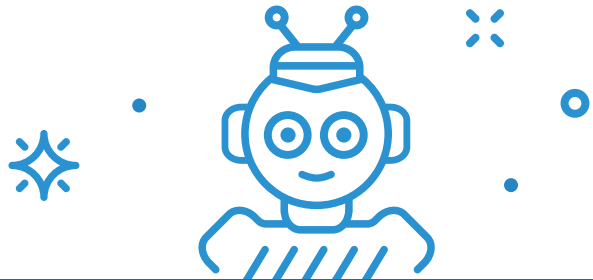
- | | |
|-------------------------|------------------------|
| Mixed waste | Energy fraction |
| Reverse Vending Machine | Metal collection point |
| Glass collection point | Plastic bottle |
| | Can |
| | Glass bottle |

7 How does a reverse vending machine identify a bottle or can having a deposit?

8 What condition do bottles and cans have to be in to be returned?

9 What could be the problem when a reverse vending machine does not work? Mention three causes.

10 You can get a deposit of different amounts for different beverage containers. What are the different deposit values in Finland?



Answers:
 1. About 70. 2. Over 90%. 3. Return, container, transport and handling. 4. New plastic bottle, backpack, shirt. 5. A deposit marking, a price tag on the shelf, or a purchase receipt. 6. Plastic bottle: energy or mixed waste, Can: reverse vending machine or metal collection point, Glass bottle: glass collection point. 7. Barcode and shape. 8. Intact, empty and with an intact label. 9. The machine's bin is full, the receipt roll has run out, or debris and liquids left at the bottom of the containers have contaminated the reverse vending machine. 10. 10, 15, 20 or 40 cents.